

ENCLOSURES & TUNING KNOBS FOR MEDICAL EQUIPMENT

OKW
GEHÄUSE
SYSTEME

**CARRYTEC**

CARRYTEC is unique in offering an integrated handle for many different tasks in medical applications. Other advantages include a flat front panel for large user interfaces, the option of mounting the enclosure on a tripod or support arm system, a protected underside area for connectors/switches and a wide range of accessories.



INNOVATIVE TECHNOLOGY FOR LIFE

Ergonomic shapes and surfaces that are pleasant to touch and cytotoxically safe are important – particularly when close contact with people is required.

OKW enclosures ensure your products look dependable, reliable and high value. The areas of application are diverse and range from wireless or wired remote controls, emergency systems, monitoring and signaling devices, through portable solutions for personal protection systems (AAL systems), analysis, diagnostics and therapy equipment, monitoring systems and IoT, to peripheral devices and data acquisition in the laboratory and in research, and much more.

We always offer creative solutions with plenty of scope for your individual product.



INTERFACE-TERMINAL

INTERFACE-TERMINAL cases can be used in a variety of ways: handheld, with an optional docking station, as a desktop unit or as a wall-mounted enclosure, each in 3 sizes and in different heights.



SMART-TERMINAL

Extruded aluminum enclosure with plenty of space for large-volume installations. Individual profile lengths on request.



EVOTEC

A wide range of enclosures for contemporary desktop applications. Robust design with a flat top part or as a desktop version with an ergonomically inclined operating panel.



PROTEC

Versatile desktop and wall-mounted enclosure with an ergonomic operating panel.



MINITEC

Two enclosure designs and easy to wear, e.g. on a neck lanyard, on a wrist strap, on a belt or on a key ring.



CONNECT

Ideal for wire connected devices. Snap-together enclosure with smooth convex side and a recessed side for a membrane keypad.



SLIM-CASE

Modern handheld enclosure with a slim design, ideal for the installation of large displays and touch screens up to 4".

FOR MORE COMFORT IN MEDICINE, IN THE LABORATORY AND HEALTH CARE

The OKW range of plastic enclosures covers many different applications, for example handheld enclosures, wall mount enclosures, desktop enclosures, tabletop enclosures, instrument enclosures etc. Choose the enclosure whose design, size and configuration best meets your particular requirements. Modern electronics packaging by OKW is characterized by ergonomic design, user-oriented functionality and high-quality molding and finishes.

With all conceivable technologies available in-house, we can finish and process the plastic enclosures and adapt them to your requirements.



SYNERGY

Versatile enclosure range made of aluminum and plastic for design-oriented desktop applications.



SOFT-CASE

4 handy sizes, optionally with intermediate ring for more installation height in different designs/colors.



COMTEC

Desktop enclosure with its front panel ergonomically inclined at 10°, a real asset when operating and reading.



MEDITEC

Large-volume enclosure system with an elegant design; high degree of stability and a wide range of options, e.g. handles, sloping control panels, side panels for more installation height, etc.

STANDARD ENCLOSURES PROVIDE A WIDE RANGE OF SUPPORT

Even our standard enclosures offer innovative and practical design features and compatibility. These include solutions for the power supply, the installation of standardized displays, high protection classes, high-quality and easy-to-clean materials, recessed surfaces for the protection of membrane keypads and displays, as well as recessed surfaces for interfaces, etc. A wide range of accessories allows you to provide the enclosures with additional functions.



STYLE-CASE

Handheld enclosure with a contoured design; guarantees safe and fatigue-free operation.

OPERATING ELEMENTS FOR MEDICAL SYSTEMS

OKW Gehäusesysteme has a wide range of modern tuning knobs for operating medical equipment, e.g. for ventilators, emergency systems, analysis, diagnostics and therapy equipment, medical IoT and for tracking and monitoring systems.

Our latest operating elements combine special technical features with a contemporary appearance. This includes optional LED illumination, flush-fitting installation, a main body which is slightly inclined towards the internal axis, function-oriented marking elements, modern color selection etc.

8

STAR-KNOBS

Our STAR-KNOBS are designed for menu driven interfaces, click rotation and click push-in for 'OK'. This reduces the number of knobs and controls required on the front panel. The illumination is a visual highlight and enhances user operation of the equipment.



CONTROL-KNOBS

New ergonomic CONTROL-KNOBS have a soft-touch surface which is easy to grip and feels comfortable in operation. The high-quality appearance – illuminated if required – distinguishes this advanced range of tuning knobs as the central element of menu-driven interfaces.



TOP-KNOBS

TOP-KNOBS are the ideal solution for lateral screw fixing or for mounting on spindles. The lateral fixing screw is innovatively concealed by functional marking elements in different colors and shapes.



COM-KNOBS

The COM-KNOBS range of tuning knob supports the appearance of modern medical applications. Safe operation is ensured by means of a collet fixture for electromechanical rotary potentiometers with round shaft ends in accordance with DIN 41 591.

THE COMPLETE PRODUCT RANGE



BODY-CASE



MINITEC



STYLE-CASE



SMART-CASE



SOFT-CASE



DATEC-POCKET-BOX



DATEC-MOBIL-BOX



DATEC-COMPACT



DATEC-CONTROL



HAND-TERMINAL



SENSO-CASE



CARRYTEC



ERGO-CASE



SLIM-CASE



CONNECT



SMART-PANEL



INTERFACE-TERMINAL



SMART-CONTROL



NET-BOX



DIATEC



EASYTEC



SMART-BOX



ROBUST-BOX



IN-BOX



SNAPTEC



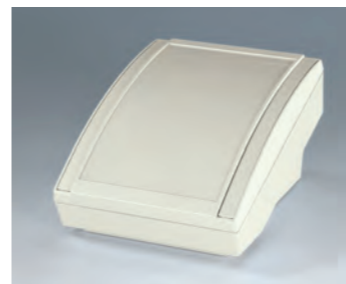
PROTEC



COMTEC



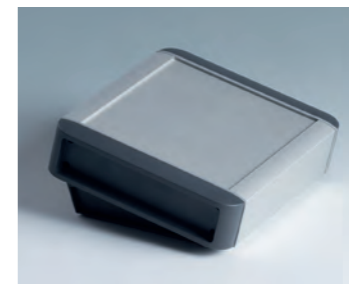
DESK CASES



DATEC-TERMINAL



UNITEC



SMART-TERMINAL



EVOTEC



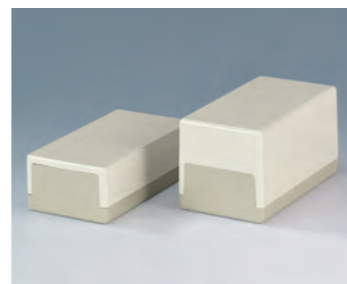
SHELL-TYPE CASES



TOPTec



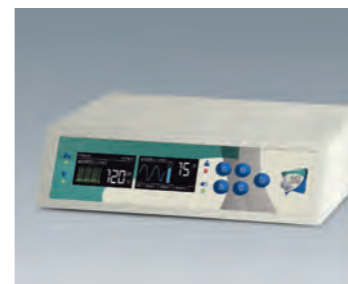
SYNERGY



FLAT-PACK CASE



ART-CASE



MEDITEC



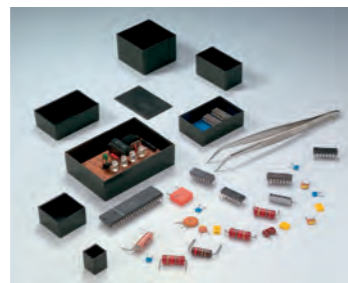
MOTEC



RAILTEC B



RAILTEC C



POTTING BOXES



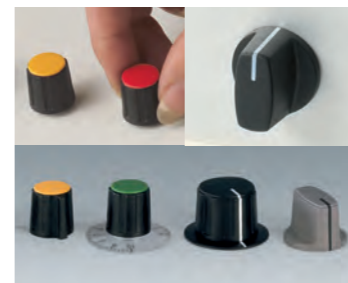
TOP-KNOBS



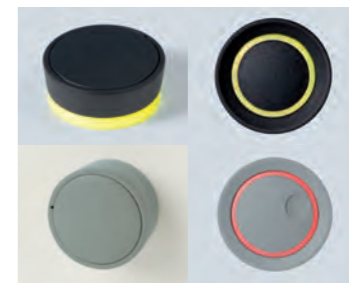
TUNING KNOBS ,CLASSIC'



COM-KNOBS



COMBINATION KNOBS



STAR-KNOBS



CONTROL-KNOBS

INDIVIDUALIZATION ACCORDING TO YOUR VERY OWN WISHES

Look at our comprehensive standard range and select the enclosure or tuning knob that best matches your ideas, your components and the needs of your customers. In the next step you merely have to tell us what you still need for your own product. Together with you we choose the necessary modifications – ideal in terms of price, quality and delivery time – to meet your specific requirements.

BODY-CASE

OKW's BODY-CASE is the new fully "wearable" standard plastic enclosure. The design is perfect for so-called "wearable technologies": on your arm, around your neck, clipped to a shirt or trouser pocket, or carried loose in an article of clothing.





MACHINING

PRODUCT LABEL

PRINTING

ASSEMBLY

LASER MARKING

LACQUERING

SPECIAL MATERIAL

CUSTOMIZING

PRINTING

You can use printing on your product to give it a personal touch. It is also possible to indicate the function and usage. With precision craftsmanship, we can carry out the required printing to your satisfaction. Depending on the printing format and type of enclosure, we can offer you screen printing, tampo printing as well as digital printing.



LASER MARKING

Laser marking is ideal for individual labelling, identifying or marking. In particular, very small machine-readable markings, e.g. QR codes, barcodes, DataMatrix codes, consecutive numbering of individual parts and individual texts/logos can be carried out quickly and easily with laser marking.



RFI/EMI SHIELDING

When it is a question of RFI/EMI and the protection of your electronics from external interference as well as increased internal emission noise, OKW Gehäusesysteme is your competent partner. To shield plastic parts, which offer no natural protection against electromagnetic radiation, we coat the inside of the enclosure with aluminum.



SPECIAL MATERIAL

SPECIAL MATERIAL "INDIVIDUAL COLORS"

On request we can also produce many of our enclosures and tuning knobs in special colors. To match the color you require, we can have the natural plastic material colored and extruded to a high standard of reproduction. Individual color adjustments are possible according to a sample, RAL or Pantone.

SPECIAL MATERIAL "V-0"

Manufacturing of enclosures in flame-resistant plastic material on request.





MACHINING

We can perform individual machining processes for you, quickly and reliably, for sample or series production quantities. You receive your enclosures ready-to-use, and only have to install the electronics.

Milling, tapping, engraving, drilling, countersinking and stamping - there is practically no limit to the variety of shapes and designs



LACQUERING

We can lacquer the enclosures and tuning knobs in any color you wish so that it matches your application or your company CI. For special requirements, such as for improving the feel of your product, for metallic effects or for protection from electrostatic discharge, OKW offers a wide choice of lacquers.



PRODUCT LABELS

For lettering and color design, we can digitally print product labels quickly and easily for small batches starting with 1 unit. The digital printing process allows different versions without a great deal of trouble, e.g. in design, with consecutive numbering, codes and technical specifications. Color gradations are also possible.



ASSEMBLY OF ACCESSORIES

We take over for you the assembly of enclosure accessories, e.g. cable glands, belt/pocket, tilt foot bars, wall-mount kits, hinges, handle bars and the application of keyboard foils, product labels, type plates, display windows, mounting pillars etc. Also assembly and packaging to customer's specifications, e.g. seals, fibre optics etc.

In order to be able to meet your requirements at all times, we maintain a large stock of over 3,000 standard products. We have a global logistics network, our products are "Made in Germany", and we offer you a long-term sales guarantee for standard enclosures and tuning knobs.



RELAXED IN ALL PROJECT PHASES

With us as your competent partner, you can look forward to your next project with complete confidence. We can advise and support you with all of our standards, our knowledge and all of our customization options.

We are one of the leading manufacturers worldwide in enclosure and tuning knob technology. OKW products are always characterized by a high level of functionality and innovation, aesthetic design, a high degree of ergonomics and quality of finish, as well as tailor-made services according to your individual wishes. Ask us now!

COMPREHENSIVE APPLICATION KNOW-HOW

Here you will find a wide range of examples of projects from medical and laboratory technology as well as the wellness sector.

You can find out more on our website at www.okwenclosures.com, in the APPLICATIONS menu. Just take a look and let yourself be inspired!



SYSTEM FOR DIGITAL RESPIRATORY SOUND ANALYSIS



PSORIASIS THERAPY UNIT





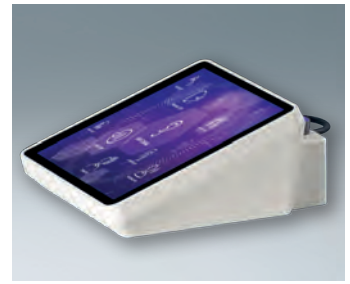
ELECTROMAGNETIC
IMPULSE THERAPY



FOOT CARE DEVICE



SURVEILLANCE MONITOR
FOR VITAL SIGNS



HEARING TEST DEVICE



PORTABLE RECEIVER



B-HEAL HYBRID BLOOD
ZAPPER



REAL-TIME LOCALIZATION IN
THE HEALTHCARE SECTOR



MEASURING SYSTEM
FOR CREATING METABOLIC
PROFILES



www.okwenclosures.com



OKW Enclosures Inc.
3000 Old Pond Road
Bridgeville PA 15017
Phone (800) 965-9872
E-Mail sales@okwenclosures.com



ASK FOR A SAMPLE!

It's quick and easy online - just go to the OKW website, add the required enclosure/ tuning knob version by clicking "Add to cart" and tick "Sample". Then add your contact details and send off the form. You will receive a confirmation of your request by e-mail, and your sample will be on its way.

Turtle © by OKW Gehäusesysteme,
Buchen, Germany. Subject to technical
modification without notice.
Nov. 2021.